

# 911 INVESTIGATOR

THE WORLD TRADE CENTER  
NEW YORK AUTHORITY

Exposing the **EXPLOSIVE** WTC Evidence

AE911Truth.org

ARCHITECTS  
& ENGINEERS  
for 9/11 TRUTH

First Edition - 2010

1000 Architects & Engineers Investigate the Destruction of 3 WTC Skyscrapers

50 Cents



Should there be a third beam of light? A third building fell on 9/11. WTC 7 may be the key to justice for the victims of the Twin Towers' destruction.

## Building 7 Implosion: The Smoking Gun of 9/11

By Richard Gage, AIA, Gregg Roberts, and David Chandler

Seven hours after the explosive destruction of the World Trade Center Twin Towers, a third high-rise building was demolished. It was not hit by an airplane. The characteristic signs of controlled demolition were everywhere.



The 47-story WTC 7 was 350 feet from the North Tower and sustained only 'insignificant' damage from falling debris.

Although it received little media attention at the time, the third-worst structural building failure in modern history occurred on September 11, 2001. World Trade Center (WTC) Building 7 was a 47-story, steel-framed, fire-protected, high-rise office building located about a football field's length from the WTC North Tower. Unlike its two taller cousins, WTC 7 was never hit by an aircraft, yet it fell to the ground suddenly, displaying the classic signatures of explosive controlled demolition.

The evidence discussed in this article was ignored, mishandled, and/or covered up by the National Institute of Standards and Technology (NIST), the federal agency last tasked with explaining the unprecedented destruction of the World Trade Center high-rises.

### A Mysterious Catastrophe

Although Building 7 was never hit by an airplane and had only isolated pockets of fires on about 10 floors, it suddenly imploded – coming down neatly, symmetrically, and completely at 5:20 p.m. The official story, according to NIST, is that WTC 7 collapsed due to "normal office fires" which created a "new phenomenon" in high-rise fires:

was followed within seconds by all the rest.

Some observers had speculated that stores of diesel fuel inside the building might have produced exceptionally intense fires leading to the unusual collapse. However, NIST has officially acknowledged that diesel fuel was not involved. NIST also ultimately concluded that the impact of debris from the North Tower was not a significant contributor to the collapse, although it was blamed for starting the fires. What NIST's top engineers failed to explain – and often even to acknowledge – in their Final Report were the many features of the building's destruction that are normally seen only in explosive controlled demolitions.

### Evidence for Controlled Demolition

After an embarrassing series of questions from AE911Truth petition signers, NIST's top engineers ultimately acknowledged some of the key facts surrounding the building's destruction. However, NIST still refuses to seriously examine the hypothesis of explosive demolition, even though demolition is the only thing that has ever caused structural failure and exhibited the characteristics of Building 7's destruction. WTC 7's failure was indistinguishable from



WTC Building 7 implodes at the free-fall acceleration for 8 stories of its 6.5 second fall, baffling architects and engineers around the world.

destruction due to thermal expansion of steel beams, leading to the progressive collapse of nine floors. This ultimately caused the failure of column #79 – which

a classic controlled implosion.

Let's consider the evidence:

See BUILDING 7 p. 2

## 1,000 Architects & Engineers Challenge Official Report of WTC Destruction

BY RICH CARAGOL, ARCHITECT

Welcome to Architects & Engineers for 9/11 Truth. We are a non-partisan association of more than 1,000 A/Es, with about 10,000 affiliates from all over the world. We are technical professionals representing more than 25,000 years of collective experience. We do *not* offer conspiracy theories. We *do* have serious questions about the official reports of the destruction of the three World Trade Center skyscrapers on 9/11. We are calling for a new independent investigation that includes all of the evidence that is missing from these building reports. We, along with other researchers and groups in the growing international 9/11 truth movement, have compiled critically important eye-witness testimony, photo, video, and scientific forensic evidence that has been ignored, falsified, or destroyed by individuals and agencies that were responsible to the public for a thorough transparent investigation.

Our website, AE911Truth.org, documents much of this important work. Our online store hosts several books, DVDs, technical papers, and other effective tools such as brochures, cards and vinyl banners, for use in educating the public.

AE911Truth was founded in March of 2006 when 20-year San Francisco Bay Area architect, Richard Gage, AIA, member of the American Institute of Architects, first heard the startling Bonnie Faulkner interview of a reluctant 9/11 researcher, David Ray Griffin, on KPFA radio, which launched Gage's own unyielding quest for the truth about the destruction of the WTC skyscrapers.

We have delivered this explosive story in more than 150 live presentations to audiences of 100 to 700 and 170 radio interviews in 30 US cities and throughout 17 foreign countries. By a show of hands, 85% of those unsure or accepting of prevailing opinion are convinced by our AE911Truth presentations. And now we have the *911 Investigator* – the first edition of our broadsheet newspaper. We have placed the AE911Truth petition in the hands of every

See ARCHITECTS p. 4

## Justice on the Horizon?

BY DONALD E. STAHL

The 9/11 Truth movement has been wrestling for years over the challenge of how to obtain a real investigation that would analyze the evidence described by Architects & Engineers for 9/11 Truth and countless others, and follow it wherever it leads. Many, for instance, don't trust that the US Congress (which brought us the omissions and distortions of the 9/11 Commission Report) would have the political will or the simple veracity to expose these incalculable misdeeds and trace them to their roots. Many seeking justice believe that it will only be found in a venue outside of the United States.

Perhaps, an exception might be a prominent initiative - Sen. Patrick Leahy's "Truth Commission" - which is currently stalled. A special prosecutor could be appointed as was done to investigate Nixon, but we know that that is not going to happen unless 9/11 Truth becomes much more familiar to the US public.

The idea of universal jurisdiction is controversial but is gaining increasing acceptance. It dates back at least to the 1945 Nuremberg Trials. Citing the concept of universal jurisdiction, two Spanish judges indicted Augusto Pinochet and six Bush administration figures. One of those judges is currently at the International Criminal Court, and there are plans underway to contact him.

Many initiatives have been undertaken by the Accountability Movement concerning alleged crimes in the Bush Administration but none involving the UN or International Criminal Court (ICC) so far.

The International Criminal Court can only prosecute crimes committed on or after its founding date, July 1, 2002.

See JUSTICE p. 4



Richard Gage, AIA and founder of Architects & Engineers for 9/11 Truth throws down the gauntlet at the February 2010 Press Conference in San Francisco, CA

## Twin Towers' Evidence Blows Away Fire Theory

By James Smith

The catastrophic destruction of the World Trade Center complex is said by government reports to have resulted from structural failure due mainly to fires initiated by the impacts of the airplanes. A closer look at the evidence reveals a much more disturbing crime.

Aside from the fact that no steel-frame high-rise building has ever collapsed due to fire prior to or since Sept. 11, the manner in which the buildings came down is itself a substantial cause for reinvestigation. A collapse due to fire would likely proceed gradually with large deformations visible in the building's perimeter, with the building tipping over slowly in the direction of the steadily weakening structural members – to the path of least resistance. Yet the Twin Towers both came down quite suddenly, without warning, and without any "jolt" that would indicate the upper mass impacting the lower. The smooth rate of descent was measured at 2/3 of free-fall. In other words, the building is accelerating (traveling faster and faster) straight down through what should have been the path of greatest resistance – the 80,000 tons of structural steel designed to resist this load. Physicists and other experts agree that this could have happened only if the underlying supporting structures were removed ahead of the falling upper building mass. The National Institute of Standards and Technology (NIST) acknowledges that each building was destroyed in fewer than a dozen seconds, and that they "came down essentially in free-fall".

For many New York City firefighters on the scene, this rapid destruction was simply beyond their prior experience. Sgt. James Canham, in the oral histories of 118 first responders, put it this way: "This changed all the rules. This went from a structure to a wafer in seconds, in seconds. I couldn't believe the speed of that tower coming down. I heard the rumble. I looked up. Debris was already 50 feet from the ground..."

Other first responders reported



WTC 2: South tower appears more like an explosion than a gravitational collapse.

experiencing explosions and flashes of light as the destruction commenced. Much of this evidence was also captured on video by multiple cameras. EMT Captain Karin Deshore, in a Nov. 7, 2001, *New York Times* interview, described the astonishing events like this: "Somewhere around the middle of the World Trade Center, there was this



An excavating machine lifts debris dripping with liquid molten metal.

## High Temperatures, Persistent Heat & 'Molten Steel' at WTC Site Challenge Official Story

By Richard Gage, AIA & Andrea Dreger

Extremely high temperatures were evident before and during the destruction of the World Trade Center Twin Towers and at Ground Zero. Seven minutes before the destruction of the South Tower, a flow of molten metal appeared accompanied by several smaller flows, as documented by the National Institute of Standards and Technology (NIST). The glowing color of the material showed that its temperature was close to "white hot" at the very beginning of the flow and "yellow-orange" further down. Iron-rich spheres in the WTC dust are additional proof of temperatures above the melting point of iron. Pyroclastic-like, rapidly expanding dust clouds after the destruction of the Towers are also only explainable with the expansions of hot gases.

The high temperature phenomena at Ground Zero are documented by various sources:

Bechtel engineers, responsible for safety at Ground Zero wrote in the *Journal of the American Society of Safety Engineers*: "The debris pile at Ground Zero was always tremendously hot. Thermal measurements taken by helicopter each day showed underground temperatures ranging from 400°F to more than 2,800°F."

A publication of the Department of Labor states: "HOT STEEL - Even as the steel cooled, there was concern that the girders had become so hot that they could crumble when lifted by overhead cranes."

How serious the heat phenomena was is also shown by the large number of thermal images that were acquired from Ground Zero (images by SPOT, MTL, AVIRIS/NASA, "Twin Otter"/U.S. Army, and at least 25 images by EarthData taken between Sept. 16 and Oct. 25).

In addition, temperature measurements by helicopter were taken each day, and the fire fighters used onsite sensors too. Many witnesses, including rescue personnel and firefighters working on the piles, described the phenomenon of "molten steel." Terms used in witness statements are, for example, "molten steel," beams "dripping from molten

See HIGH TEMPS p. 3

### To Order reprints of the 911 INVESTIGATOR:

Visit the online store  
[www.ae911truth.org](http://www.ae911truth.org)

200 copies - \$35, 100 - \$20, 50 - \$15  
plus S&H

Online version with links to reference material:  
[www.ae911truth.org/911Investigator](http://www.ae911truth.org/911Investigator)

Published by: AE911 Truth in cooperation with the  
Rock Creek Free Press

Editor: Dwain Deets editor@AE911Truth.org

Asst. Editor: Gregg Roberts

Layout: Matt Sullivan

Asst. Manager: Rich Caragol

Architect & Engineers for 9/11 Truth

2342 Shattuck Ave., Suite 189

Berkeley, CA 94704

Phone: (510) 292-4710

See TWIN TOWERS p. 2



## Building 7 Implosion

(continued from page 1)

### Speed of Collapse

As documented by video footage, Building 7 collapsed at free-fall acceleration for a distance of more than 100 feet – equal to at least eight stories.

NIST initially denied Building 7's free-fall in its Draft Report released in August 2008. In the technical briefing that followed, NIST's lead investigator, Dr. Shyam Sunder explained, "A free-fall time would be an object that has no structural components below it." He claimed that WTC 7 took 40 percent longer than "free-fall time" to collapse, "and that is not at all unusual because there was structural resistance that was provided in this particular case. And you had a sequence of structural failures that had to take place, and everything was not instantaneous."

However, physics instructor David Chandler had used the existing network television videos to carefully measure and document the acceleration of the building during its fall. His published analysis had shown conclusively that a significant period of free-fall was an indisputable fact. He publicly challenged NIST's claims at the technical briefing. Along with several others, he filed formal requests for corrections during the public-response period.

Having been cornered, NIST reversed its initial denial of free-fall in its Final Report. However, it couched its revised position in deceptive language, and failed to explain how freefall could be compatible with its fire-induced-progressive-collapse theory. For the

structural steel might have acted in ways that it had never acted before, and (3) that this all just happened to occur on a day when terrorists did something they had never done before. Yet, officials have not taken all the relevant evidence into account, and they have not provided even a superficially coherent explanation. What is the missing evidence?

### Evidence of Thermite Incendiaries

Prior to the NIST investigation, the Federal Emergency Management Agency (FEMA), had conducted a preliminary, cursory, underfunded investigation and produced a Building Performance Assessment Report. In Appendix C of that report, FEMA described its analysis of two steel samples, one thought to be from Building 7 and the other from Tower 1 or 2. The analysis of the WTC 7 sample showed "evidence of a severe high temperature corrosion attack on the steel, including rapid oxidation and sulfidation with subsequent intergranular melting..."

"A liquid eutectic mixture containing primarily iron, oxygen, and sulfur formed during this hot corrosion attack on the steel..." "No clear explanation for the source of the sulfur has been identified." The New York Times called this "perhaps the deepest mystery uncovered in the investigation." What did NIST say about this mystery described by FEMA? Nothing – there was no mention of this crucial report at all.

Neither jet fuel nor office fires can reach



## Twin Towers' Evidence Blows Away Fire Theory

(continued from page 1)

orange and red flash coming out. Initially it was just one flash. Then this flash just kept popping all the way around the building and that building had started to explode. The popping sound, and with each popping sound it was initially an orange and then a red flash came out of the building and then it would just go all around the building on both sides as far as I could see. These popping sounds and the explosions were getting bigger, going both up and down and then all around the building." There are many similar accounts in this astonishing series of oral recordings effected by NYC Fire Commissioner,

"Initially it was just one flash. Then this flash just kept popping all the way around the building and that building had started to explode."

Karin Deshore, in a Nov. 7, 2001, New York Times interview

Thomas Von Essen, but kept hidden by the city of New York until it was ordered by a federal appeals court to release them to the *New York Times*.

Also captured on video and still photos were isolated explosive jets of material expelled from the sides of the structure, sometimes 20-40 stories below the "crush zone". These precisely mimic what are known as "squibs" in the controlled demolition industry. Normally such charges are used to cut



Multiple isolated ejections up to 60 stories below the "crush zone" can be seen exploding horizontally.

structural steel members so that the structure is able to fall with little to no resistance. The 110 floors, each an acre in size, are missing. Rubble pile photos reveal only a 2-story pile of metal debris.

As the WTC skyscrapers disintegrated before the eyes of stunned observers, steel framing sections weighing four to nine tons were hurled up to 600 feet away. This required an explosive force capable of ejecting the perimeter wall units at up to 70 mph as if out of a cannon. Some 90,000 tons of concrete and metal decking were pulverized, creating pyroclastic-like flows (hot gases with suspended solids) similar to those observed and filmed during the explosion of the Mt. St. Helens volcano.

When the clouds of dust settled, what was left were remarkably symmetrical debris fields consisting mainly of completely dismembered structural steel framing. Although the media often repeats that the Twin Towers' concrete floors came down like a series of stacked pancakes, there were in fact no pancaked floors to be found in the photos or videos of the debris piles. "There's no concrete... it was pulverized," gasped Gov. Pataki at his first visit to the site.

The mass media and government officials continue to exclude this topic from public conversation. We encourage you to join us in speaking out.

For further documentation and analysis of the evidence at the destruction of the World Trade Center see the DVD "9/11: Blueprint for Truth – The Architecture of Destruction" available at [AE911Truth.org](http://AE911Truth.org).

## Nullifying Newton: Official Story Violates Laws of Physics High School Physics Teacher Corrects NIST

By DICK SCAR

The National Institute of Standards and Technology (NIST) maintained in its August 2008 Final Draft Report, and associated technical briefing conference, that WTC Building 7 took 40% longer to collapse than if it had been in freefall. NIST Project Leader Shyam Sunder explained that WTC 7 could not have come down in freefall, because there was resistance to the fall provided by the steel structure underneath. But high school physics teacher David Chandler demonstrated that NIST was using fraudulently manipulated data to try to show a slower rate of collapse.

**WTC Building 7 in Free-fall**  
NIST, when confronted publicly with evidence produced by Chandler, finally admitted in its November 2008 Final Report that WTC 7 fell for 2.25 sec. in freefall, but they brushed off this newly acknowledged fact as being "consistent with the results of the global collapse analysis," despite Sunder's earlier statement. Thus, the NIST simulation and analysis represented a multi-million dollar effort to avoid explaining what really happened.

Many other physics analyses are presented by Chandler on his website [911SpeakOut.org](http://911SpeakOut.org), applying the laws of



Physics teacher David Chandler forced NIST to admit WTC building 7 experienced over two seconds of free-fall.

physics to WTC 7 and the Twin Towers. For a more detailed account of the unexplained features of the destruction

See NEWTON p. 4

## The World Trade Center Dust



The World Trade Center dust is remarkable due not only to its having blanketed Lower Manhattan 4" to 12" thick in many places, but also for the secrets that it would reveal.

## Billions of Previously Molten Iron Spheres Were in WTC Dust Reveal Use of Thermite Materials

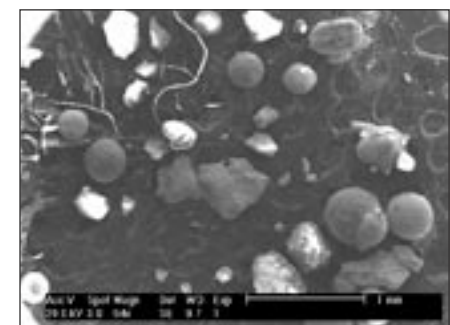
By JAMES SMITH & ANDREA DREGER

The World Trade Center dust is remarkable due not only to its having blanketed Lower Manhattan 4" to 12" thick in many places, but also for the secrets that it would reveal.

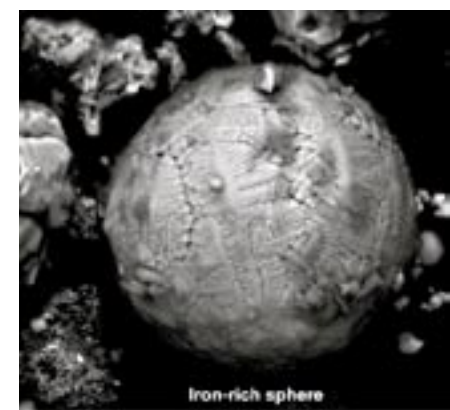
Iron-rich microspheres were so common in WTC dust that EPA's WTC panel discussed their use as one of the signature components to distinguish WTC dust from so-called "background" dust (i.e. common office-building dust).

RJ LeeGroup, evaluating the contamination of the Deutsche Bank building at 130 Liberty Street, also described these iron-rich spheres, and actually used them as one of their signature markers. In other words, it wasn't regarded as WTC dust unless it contained these spheres. The chemical composition and micro-images of two WTC iron-rich spheres were documented by the US Geological Survey.

The fraction of microspheres in the dust varied (between 0.2 and 1.3 % for USGS samples and a mean of 5.87% for all RJ Lee samples) depending on the area where the samples were taken. Due to their shape and density, the spheres were not likely to have traveled as far as other components of the dust. The spheres' diameters ranged from about one micron (0.001 mm) to 1.5 mm.



SEM (Scanning Electron Microscope) image of WTC dust shows large quantities of iron rich microspheres.



The microspheres must have been formed at extremely high temperatures during the World Trade Center's destruction – temperatures exceeding the melting point of iron (~2,700° F). The

spheres must have been molten when they were created in order to take their spherical shape. Such high temperatures could not have been produced by jet fuel or office building fires, which reach only up to 1,800 °F under the most severe fire conditions. However, the thermite reaction produces molten iron and aluminum oxide as the reaction

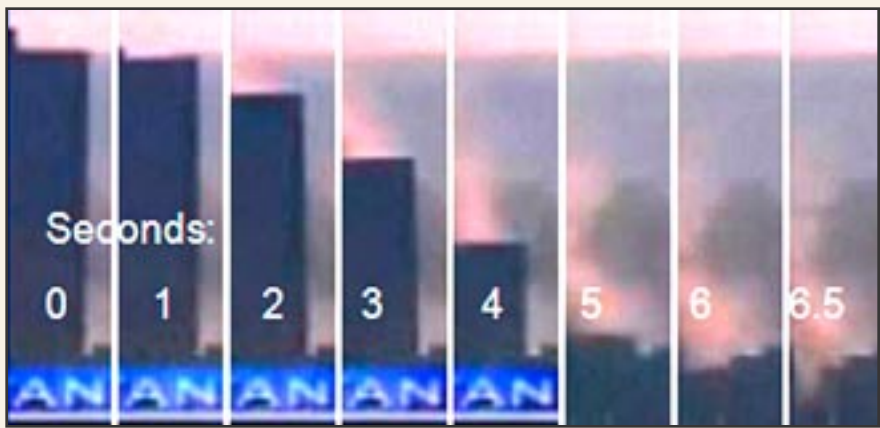


Molten metal started to pour from the side of the WTC South Tower - 7 minutes prior to its destruction.

products. After being ejected into the atmosphere, molten iron droplets would be pulled into roughly spherical shapes by surface tension. They would then cool, solidify, and fall out – preserving in their spherical shape the information that they were once molten, and preserving in their chemical signature information about their origin.

This, along with the chemical makeup of the spheres, was first discussed by physicist Steven Jones and other scientists in two articles published in 2007 and 2008. The chemical signature of several of the spheres shows significant amounts of aluminum, thus matching the signature of thermite residue but not that of steel. Some of these spheres also contain sulfur but no calcium. So the origin of the sulfur cannot be gypsum (from the buildings' wallboard). Thermate, a special thermite mixture developed by the military, contains sulfur. The chemical signature of many of the WTC dust spheres also matches "strikingly" that of the spheres and spheroids found in the residue of ignited red/gray nanothermite composite chips.

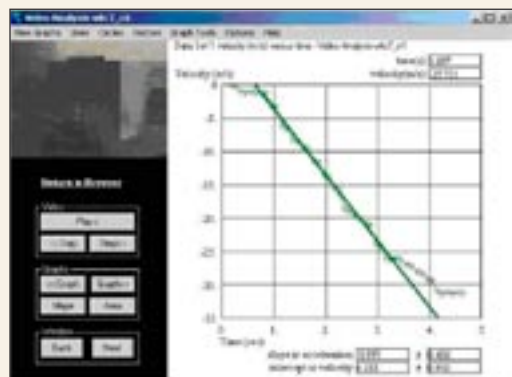
Surely a new investigation is called for that takes into account the minimum 2800° F heat source necessary to create billions of molten iron droplets. Join [AE911Truth](http://AE911Truth.org) and the burgeoning 9/11 truth movement in our pursuit of real answers and accountability from our governmental agencies who were tasked with explaining the destruction of the WTC towers.



WTC 7: free-falls through 40,000 tons of structural steel designed to resist 5x its load in 6.5 seconds.

observed straight-down collapse to happen, an immense network of heavy steel columns and beams would have had to be forcibly removed and more than 400 structural-steel connections would have had to fail every second, evenly, all across each of the eight floors involved. These failures had to occur ahead of the collapsing section – and could not be caused by it – because a freefalling object cannot exert force on anything in its path without slowing its own fall.

Yet NIST's admission of the fact of



WTC 7: in freefall for eight stories.

freefall, together with Sunder's previous acknowledgment of the simple meaning of that fact, led to no reconsideration of its fire-induced, single-column-initiated, progressive-collapse hypothesis. Moreover, in what looks like an attempt to bury the discussion, its change of stance on the question of freefall was omitted from the list of changes accompanying its Final Report.

### Symmetry of Collapse

The overall building mass fell suddenly, uniformly and with almost perfect symmetry through what should have been the path of greatest resistance – some 40,000 tons of structural steel. According to structural engineer Kamal Obeid, this requires a precisely-timed, patterned removal of critical steel columns – which office fires, a gradual organic process, simply cannot achieve.

Only a carefully engineered series of explosions (or incendiaries) could cause a steel-framed skyscraper to collapse in on itself – and land mostly within its own footprint. After all, demolition companies are paid large sums to accomplish this extremely difficult feat, and only a few can do it with tall buildings. Also, the destruction was complete. This building had been built especially strong so that alternate floors could have been removed in case a tenant needed an extra-tall space. Yet, its forty-seven stories were reduced, in fewer than seven seconds, to about four stories of debris – having fallen like a house of cards – with the almost complete dismemberment of the braced and welded moment-resisting (bend-resistant) frames. Again, this is something fire could not have, and has never, achieved.

### NIST Withheld Evidence

Had officials taken all the relevant evidence into account and provided a superficially coherent explanation, it would, at least, make sense to entertain the ideas that: (1) fire might have acted in ways that it had never acted before, (2) modern

anywhere close to steel's melting point, much less its evaporation point, even if those critical temperatures had been lowered by the presence of free sulfur. So what could have caused this "high temperature corrosion attack?"

Thermite is a mixture of powdered iron oxide and elemental aluminum which, when ignited, reacts violently at 4,000-4,500° Fahrenheit (F) – well above iron's melting point of 2,800° F, producing aluminum oxide and molten iron. When free sulfur is added to the mixture, the iron melts at a lower temperature. Thermite with sulfur added is called thermate. Structural steel in contact with ignited thermate also melts at a lower temperature. Contrary to what NIST and others have claimed, the sulfur could not have come from gypsum wallboard, where it is an inert, chemically "locked" ingredient.

### Extreme Hot Spots

The United States Geological Survey (USGS) used NASA thermal imaging of the WTC rubble pile surface to document hot spots with extreme temperatures of almost 1,400° F. These temperatures are hotter than most office fires produce, and there were no fires on the surface of the WTC 7 pile following the collapses.

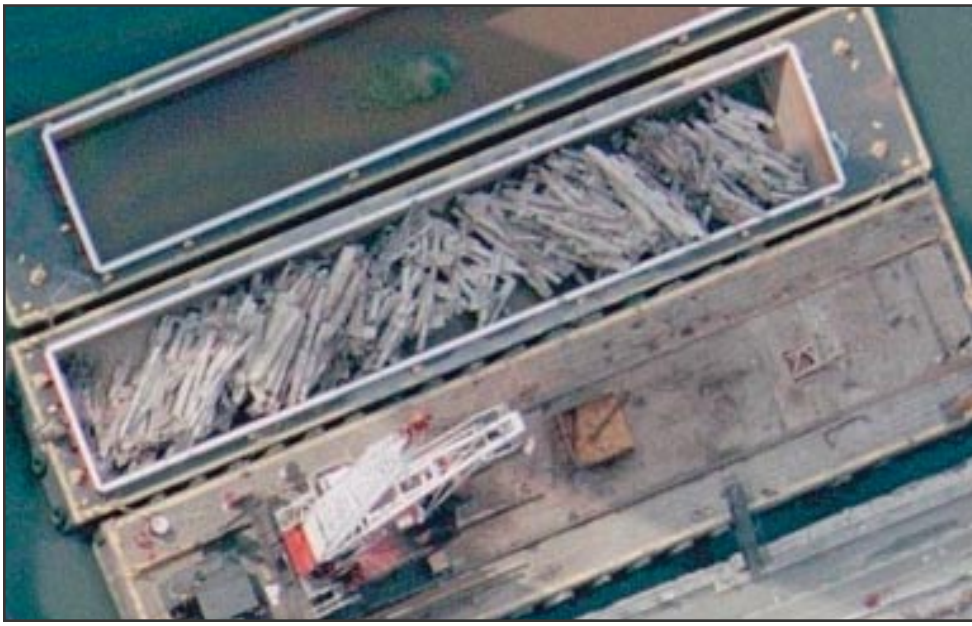
The detected surface temperatures indicate much higher temperatures deeper within the pile. These extreme temperatures persisted for several weeks, despite the continuous spraying of millions of gallons of water onto Ground Zero – so much water that one worker described the result as "a giant lake." Thermite contains its own source of oxygen and burns just as well under water.

### Summary

The collapse of WTC Building 7 represents one of the worst structural failures in modern history. The official story contends that fires weakened the structures, resulting in a gravitational collapse. The evidence, obvious to so many researchers but omitted from NIST's Final Report, supports a very different conclusion – one that points squarely to explosive controlled demolition.

If WTC 7 was intentionally brought down, then clearly it becomes a 'smoking gun' that must be investigated. Who were the terrorists that had access to this highly secure building, occupied in part by the CIA, FBI, Dept of Defense, IRS, SEC, and others, and the technology required to prepare it for demolition? The 1,200 Architects & Engineers for 9/11 Truth present the scientific forensic data, evidence, and eyewitness and video testimony. We do not speculate as to who might have been responsible or how they might have, so far, gotten away with the crime of the century. The destruction of the Twin Towers must be re-evaluated as well in light of the WTC 7 revelation. We therefore call for an unimpeachable investigation with subpoena power into the destruction of all three WTC skyscrapers. We ask you to do your part as a citizen to join us in making it happen.





Instead of being analyzed to determine the cause of failure, the WTC steel was rapidly shipped off to China for recycling.

## Evidence Destroyed is Justice Denied

By DICK SCAR, BSAE

The destruction of the three World Trade Center skyscrapers on 9/11 caused the greatest loss of life and property damage in U.S. fire history and constituted the largest structural failures in world history. This event should have received the most thorough investigation of any event in history.

Evidence is collected and investigation is performed even on ordinary house fires in order to determine the cause, especially if foul play is suspected. But the WTC investigations performed by the National Institute of Standards and Technology (NIST) were at best incomplete and at worst criminally fraudulent. FEMA cleanup workers and NIST engineers alike completely ignored the most obviously relevant and applicable recommendations of the National Fire Protection Association, NFPA 921, the nationally accepted guideline for fire and explosion investigation.

### Wholesale Destruction of Forensic Evidence

The 9/11 disaster scene in Manhattan, dubbed "Ground Zero," should have been treated as a crime scene in accordance with its immediate appellation "the Crime of the Century," rather than simply as



400 truck loads of steel per day were removed.

the scene of a terrorist attack. Material and debris where injured people might be trapped had to be removed as quickly as practical. But, as important evidence, it should have been taken to a secure site for further investigation. NFPA 921 states: "Once evidence has been removed from the scene, it should be maintained and not be destroyed or altered until others who have a reasonable interest in the matter have been notified." Moreover, after there was no reasonable hope of finding any more victims alive, there was no longer any need for the headlong rush to dispose of the steel.

As the NIST report admitted, the three WTC skyscrapers whose destruction was blamed on fire were the only cases of modern steel-framed high-rise buildings in world history to have ever completely collapsed because of fire. The structural steel was therefore extremely important evidence. Yet this evidence was quickly hauled away by up to 400 trucks per day and taken ... where? Not to a secure place to await inspection, but to barges 400 truck loads of steel per day were removed.

Instead of being analyzed to determine the cause of failure, the WTC steel was rapidly shipped off to China – for recycling headed for India and China – for recycling. New York Mayor Rudi Giuliani, a former prosecutor, surely knew the importance of securing evidence – and that the law in fact requires it. Yet, of the 200,000 tons of structural steel contained in the Twin Towers, only a few hundred pieces were saved. And, according to NIST, no physical evidence with clear traceability to WTC Building 7 remains.

According to Erik Lawyer, founder of Firefighters for 9/11 Truth, officials in charge of the scene admitted that "the majority of the evidence was destroyed." Building fire expert and editor-in-chief of Fire Engineering Magazine Bill Manning wrote, "Such destruction of evidence shows the astounding ignorance of government officials to the value of a thorough, scientific investigation...I have combed through our national standard for fire investigation, NFPA 921, but nowhere in it does one find an exemption allowing the destruction of evidence for buildings... To treat the September 11 incident any differently would be the

height of stupidity and ignorance... The destruction and removal of evidence must stop immediately."

### Explosive Evidence Ignored

NIST ignored clear evidence of explosives and incendiaries in the destruction of all three high-rises. NIST excluded anything that happened after the so-called point of collapse initiation from the Twin Towers investigation despite that one of their stated "objectives" was to determine "how WTC 1 and WTC 2 collapsed. They postulated an outlandish "blast" scenario in order to summarily dismiss the hypothesis of explosives at Building 7.

Hundreds of first responders and others on the scene reported hearing explosions – yet NIST ignored them. More than 100 of these reports were recorded by orders of Fire Commissioner Thomas Von Essen in October of 2001, but the City of New York withheld this key evidence until forced by the New York State Court of Appeals to release it in August 2005.

NFPA 921 calls for the consideration of the possibility of exotic accelerants or explosives when "pulverized concrete", "high order damage", and "lateral ejection of building elements" are found. Pulverized concrete covered all of lower Manhattan. The Twin Towers were completely destroyed down to their individual structural elements, and ejected as far as 600 feet.

NFPA 921 states that accelerants should be investigated in any fire crime scene and that molten steel may indicate the use of thermite, an incendiary and accelerant. Yet NIST did not look for thermite. Since then, however, independent scientists have found a high-tech version of thermite, known as nanothermite, in dust samples collected from the WTC site. Previously molten iron microspheres had already been found in the WTC dust by USGS researchers and environmental engineers, further indicating high temperatures associated with the use of thermite.

### Molten Metal and High Temperature Phenomenon Ignored

More than two dozen eyewitnesses have reported seeing molten metal in the basements of all three WTC high-rises. This is confirmed by photos and verified



Molten metal witnessed by dozens completely omitted from NIST report.

by infrared satellite images indicating extremely high temperatures. Yet John Gross, Lead Engineer for NIST, denies even having heard any reports of molten metal at Ground Zero.

NIST stated in 2007 on its website to have the "vision to lead the world in methods of measurement and prediction of the behavior of fire and its effects." Conspicuously, NIST never has openly shown any interest in investigating the unusual, allegedly fire related, high-temperature phenomenon in the WTC collapse piles.

### Conclusion

It is clear that the actions by NYC/Port Authority officials, FEMA managers, and NIST engineers relative to the collection and preservation of the evidence of this monumental crime looks more like a cover-up than an investigation. AE911Truth is dedicated to obtaining a real investigation that properly accounts for the evidence that remains and uses the scientific method to analyze it. Join us in this historic pursuit of justice.

# Advanced Pyrotechnic or Explosive Material Discovered in WTC Dust

By GREGG ROBERTS AND ANDREA DREGER

Starting in 2007, a group of independent researchers began examining the dust from the World Trade Center disaster to see if identifiable residues might help explain the highly energetic destruction that was observed in the videos. Naked-eye and microscopic examination revealed numerous tiny metallic spheres and distinctive red/gray chips in a magnetically attracted portion of the dust.

The existence of iron-rich microspheres in the WTC dust was documented in 2004 and 2005. But nothing yet had been published about the red/gray chips in the dust until Steven Jones first described them in 2007. What might have been misinterpreted as the residue of common paint when seen with the naked eye proved to be a highly energetic advanced nano-composite material.

In April 2009, a team of scientists that included physicist Steven Jones (formerly BYU), chemist Niels Harrit (University of Copenhagen, Denmark), physicist Jeffrey Farrer (BYU), and six other authors published their findings regarding the red/gray chips in the peer-reviewed paper "Active Thermic Material Discovered in Dust from the 9/11 World Trade Center Catastrophe," The Open Chemical Physics Journal, 2009, 2, 7-31, available online.

Red/gray chips from four different WTC dust samples were examined using scanning electron microscopy, X-ray energy dispersive spectroscopy (XEDS), and differential scanning calorimetry. The main findings of the study are as follows:

The material in the red layer consists of intimately mixed particles of iron oxide and aluminum embedded in a carbon-rich matrix. The particles range in size from tens to hundreds of nanometers. Elemental aluminum was present in thin plate-like structures, while iron oxide was present as faceted grains, roughly 100 nm across – about a thousand times smaller than a human hair.

Iron oxide and aluminum are the ingredients of classic thermite, an incendiary that burns unusually hot at approximately 4500°F, producing aluminum oxide and molten iron. The carbon content of the matrix indicates the presence of an organic substance.

When the red/gray chips were heated to about 430° C. (806° F.), they ignited, releasing relatively large amounts of energy very fast. This behavior matches "fairly closely an independent observation on a known super-thermite sample" (as reported in a paper an article published by researchers associated with Lawrence Livermore National Laboratories). The residue of the ignited red/gray chips included iron-rich spheres, "indicating that a very high temperature reaction had occurred, since the iron-rich product clearly must have been molten to form these shapes." The chemical signature of the spheres and spheroids "strikingly matches the chemical signature of the spheroids produced by igniting commercial thermite, and also matches the signatures of many of the microspheres found in the WTC dust."

The scientists concluded based on all their findings that the red layer of the red/gray chips "is active, unreacted thermic material, incorporating nanotechnology," and that it "is a highly energetic pyrotechnic or explosive material." (See the published study for all the findings.)

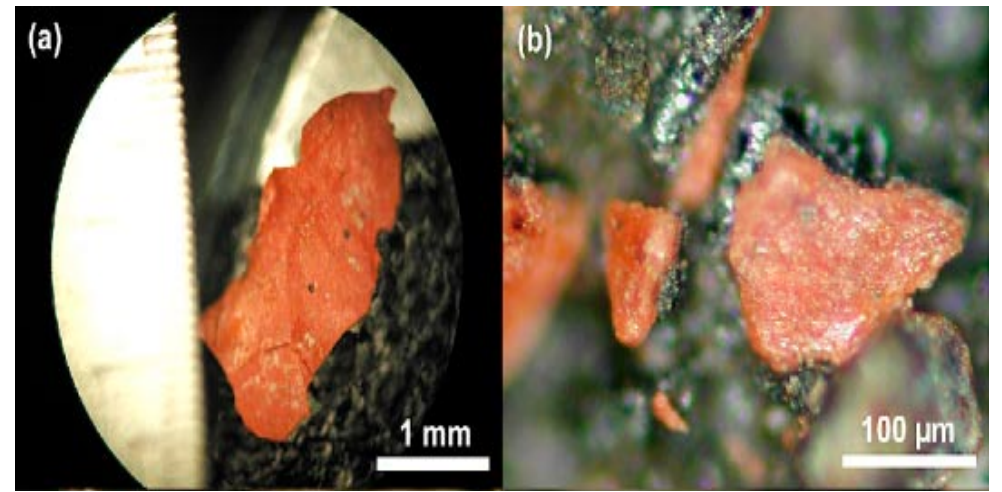
Energetic nanothermic compounds have been researched since the 1990s. One advantage of nanothermites as stated in the literature is their ability to enhance the destructive effect of high explosives; the high rate of reaction in nanothermites allows the main charge to release its energy even faster if nanothermite is used as an igniter. Such igniters also do not leave behind lead-containing residues, as lead azide igniters do.

Nanothermic composite materials have been extensively researched by US national labs. The energy released by these special materials can be tailored for various applications, they can be designed to be explosive by adding gas-releasing compounds, and they have potential for easy storage and safe handling.

As of 2002, the production process at the Naval Surface Warfare Center for ultra fine grain (UFG) aluminum, alone, required 14 pieces of high-tech equipment. The article states: "The current state of UFG aluminum production is that this is an area that still requires considerable effort" (AMPTIAC Quarterly, Special Issue, "DOD Researchers Provide A Look Inside Nanotechnology," 2002).

Red/gray chips, with a red layer that comprises ultra fine grain aluminum platelets intimately mixed with faceted grains of nano-sized iron oxide, embedded in a carbon-rich matrix, cannot have been widely available in 2001. Niels Harrit, lead author of the study, stated "These new findings confirm and extend the earlier finding of previously molten, iron-rich microspheres in the World Trade Center dust. They provide strong forensic evidence that the official explanation of the WTC's destruction is wrong."

Given the explosive nature of the destruction of the WTC Twin Towers along with the finding of this high-tech nano-composite pyrotechnic or explosive material in the WTC dust samples there exists strong evidence which should compel all who are aware to be active in supporting AE911Truth in our effort to obtain a real investigation.



Highly energetic/pyrotechnic or explosive red/gray chips discovered in WTC dust samples.

### What is Thermite?

Thermites are a class of compounds used for various purposes like welding, extraction of metals from ores, or, by the military, as an incendiary capable of damaging tanks and other equipment. The most common form of thermite is based on aluminum powder and iron oxide; the term "thermite" is therefore often used as a synonym for the aluminum/iron oxide thermite mixture.

Thermite reactions are highly exothermic – i.e. they release relatively large amounts of energy. The common aluminum/iron oxide thermite mixture reacts into aluminum oxide, which is present in a whitish aerosol/"smoke", and iron, present as molten iron at temperatures of up to 4,500° F.

## High Temperatures, Persistent Heat and 'Molten Steel' at WTC Site

continued from page 1

steel," "molten steel ... like you're in a foundry. Like lava, from a volcano".

A photograph by a Ground Zero worker shows an excavating machine lifting debris from the WTC wreckage dripping yellow/orange molten metal.

WTC clean-up workers and 9/11 artifacts architect Bart Voorsanger, of the video "Relics in the Rubble," found several pieces: "fused element of steel ... molten steel and concrete and all of these things



Sept 16, 2001 thermal images reveal 1,400°F temperatures at the surface of the WTC 1, 2 & 7 debris piles - yet there were no fires at the surface after the collapses. These are the radiant temps from the molten metal deep beneath the surface.

...all fused by the heat," weighing several tons each. These foreign objects came to be known as "meteorites."

The heat at Ground Zero was not only extreme, it was also persistent, as proven not only by witness statements, and photographs of orange-red glowing steel as late as October, but also by thermal images taken by NASA and EarthData satellites. The EarthData thermal images also show that the "hot spots" remained at the same locations, the phenomenon did not "move" across the site, like one would expect from fire.

University of California professor Abolhassan Astaneh-Asl, the first structural engineer given access to the WTC steel at Fresh Kills Landfill notes, "I saw melting of girders at the World Trade Center". Astaneh also "describes the connections [between supporting columns] as being smoothly warped: 'If you remember the Salvador Dali paintings with the clocks that are kind of melted – it's kind of like that. That could only happen if you get steel yellow hot or white hot – perhaps around 2,000 degrees.'"

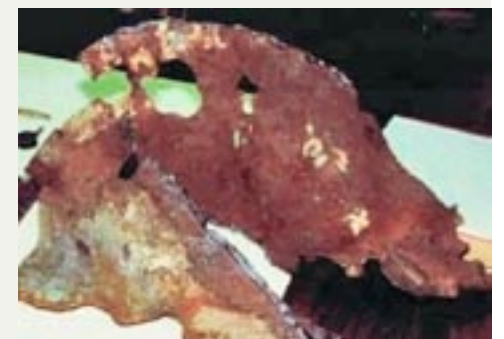
Others pointed out that huge columns that were bent without that the flanges of the columns showed any cracks or buckling must have been at very high temperatures. FEMA documents, in Appendix C of its May 2002 BPAT report, "evidence of a severe high temperature corrosion attack on the steel, including oxidation and sulfidation with subsequent intergranular melting." A "sulfur-rich liquid [containing 'primarily iron, oxygen, and sulfur'] penetrated" into the steel.

The extremely high temperatures evident contradict the official story. Office and hydrocarbon content fires cannot reach temperatures in the range that iron or structural steel melts. This was acknowledged by NIST's John Gross in the same talk where he said regarding molten steel, "I know of absolutely nobody,

no eyewitnesses that said so, nobody that's produced it." NIST itself performed extensive fire tests to establish the temperatures reached by WTC office and jet fuel fires. The temperatures established are far below the temperatures required to produce all of the above phenomena – which occurred both before and during the destruction and at Ground Zero.

The steel problem was "solved" by NIST by excluding most of the steel from being systematically examined for failure modes and experienced heat excursions. The steel collected by the Port Authority, which has been stored in hangar 17 at JFK airport, was not included in the investigation except for 12 pieces. From the 236 pieces cataloged by NIST many were excluded based on the circular argument that only columns from impact and fire floors were of interest in the investigation (thus, NIST avoided having to discuss 51 of their 55 core columns). The piece from FEMA Appendix C was also excluded. In addition, NIST developed a new method of "visual examination" that substituted the common method as the systematically used tool. NIST's "paint cracking" method came with the "advantages" that it is false positive, that many steel columns had no paint left for examination, and that NIST was not forced to notice pieces in their collection that were obviously heat-affected, but came from non-fire floors. NIST's steel "examination" shows that their "working hypothesis" was in fact their premise.

Some want to blame "natural thermite reactions" for the high temperature phenomena: airplane aluminum had reacted with rust. This possibility can be ruled out based on the findings of a study that was conducted in 2002 at the Colorado School of Mines for the Minerals Management Service. Officially, the study, whose lead author is a close research associate of T. W. Siewert from NIST, is about thermite-sparking in off-shore environments. But due to a very odd study design the question about the feasibility of



FEMA's May 2002 report documents evidence of a severe high temperature corrosion attack on the steel.

natural thermite reactions in the WTC is answered too. The authors established the ignition temperatures for rust, dehydrated rust and iron oxide based thermite reactions. The necessary temperatures are so high that one can conclude that thermite reactions between airplane aluminum and rust (some rust was on beams according to documents), dehydrated rust (rust dehydrates in fire) or iron oxide (iron oxide was part of the primary paint) were not feasible in the WTC. Also tested was what happens when aluminum impacts rust at very high velocity, so the possibility that the impacting airplanes caused natural thermite reactions can be ruled out too.

The overwhelming evidence of these extremely high temperatures, which normal office fires and jet fuel cannot produce, cries out for a new investigation. The hypothesis of explosive controlled demolition must be examined and ruled out, if possible, so that Americans can know for sure what was the real cause of the catastrophic loss of life at the WTC on 9/11.



# Justice on the Horizon?



The victims of the WTC disasters still cry out for justice.

JUSTICE from p. 1

As of March 2010, 111 states are members of the Court, and a further 37 countries, including Russia and the United States have signed but not ratified the Court's founding treaty--the Rome Statute. A number of states, including China and India are critical of the court and have not signed the Rome Statute.

The ICC can generally exercise jurisdiction only in cases where the accused is a national or a state party, the alleged crime took place on the territory of a state party, or when a situation is referred to the court by the United Nations Security Council.

The ICC is designed to complement existing national judicial systems: it can exercise its jurisdiction only when national courts are unwilling or unable to investigate or prosecute such crimes. Primary responsibility to investigate and punish crimes is therefore left to individual states.

The Final Report of the National Commission on Terrorist Attacks Upon the United States was issued on July 22, 2004. NIST's final report on the WTC Towers was issued in October 2005. Fraudulent statements in these documents therefore could be subject to ICC investigation.

The AE911Truth Justice Team has also explored the concept of an International Tribunal, modeled after the Russell War Crimes Tribunal of the Sixties (organized

through the efforts of Bertrand Russell).

We found that Russell's Tribunal left a legacy in the form of the Permanent Peoples' Tribunal (Tribunale Permanente Dei Popoli), an organization which facilitates but does not fund similar tribunals. Currently, the BRussells Tribunal [sic] has been active in Brussels, Belgium, and a Permanent Peoples' Tribunal is being held in Madrid on the subject of multinational corporations.

There are at least three types of tribunals:

•**International Citizens' Commissions**, (described by Arthur Jay and Judith A. Klinghoffer in *Mobilizing Public Opinion to Advance Human Rights* and Russell, Schoenman, and Chomsky in *Against the Crime of Silence*) which have only moral efficacy and rely on the statutes of their participants.

•**Grand Juries** (described by Richard D. Younder in *The People's Panel*) whose powers in the UK and USA are continually under pressure from, and subject to change by, the authoritarians of the time.

•**Truth Commissions**, (described by Priscilla Hayner in *Unspeakable Truths* and proposed by Senator Leahy) which are created, sometimes with foreign financial help, by governments to expiate their own crimes.

AE911Truth will help create and provide evidence to any grand juries or international tribunals that are dedicated to exposing the truth about the destruction of the three World Trade Center towers on 9/11.

We hope that there will be national subcommittees devoted to creating grand juries in several countries, and another committee devoted to the creation of an international tribunal. International teams would consist of members interested in working either on a 9/11 grand jury in their country or on an international tribunal.

In Canada, international legal experts are moving forward with the "11/11 Project" for an international inquest on the mass crimes of September 11, 2011. (See Barry Zwickler's discussion of the 11/11 project in his poignant address to the Understanding Deep Politics Conference in Santa Cruz, CA in May 2010.)

An immediate priority for AE911Truth, no matter what the venue of justice, is the cataloging, safeguarding, and certifying of the physical evidence, including the taking of notarized sworn statements from 9/11.

AE911Truth is committed to supporting the pursuit of justice. We encourage those who are interested, no matter where you are located, to join us in this cause. There is no greater calling in these times than that of the patriot who steps forward and risks everything to save his country.

# Volunteers and Financial Supporters The Foundation for Mission Success

By MARIAN GALBRAITH

It will be clear to our readers that government grants and prestigious family endowments are highly improbable funding sources for an organization such as ours. The valuable work of AE911Truth is supported only by the grassroots community of 9/11 Truth-aware individuals. Thanks to a growing number of volunteers and financial supporters, we have made great strides in public awareness, especially in the last year.

For starters, the number of our Architect/Engineer petition signers calling for a new WTC investigation has accelerated from 400 last summer to well over 1,200 so far this year -- more than in

our first three years combined. This rate of growth makes our next major milestone of 5,000 A/E's well within reach.

On top of successful television appearances on Fox KMPH in Fresno, New Zealand's Close Up show on NZTV, and CBC's "Fifth Estate" AE911Truth has now been asked to appear on China's CCTV program, "Dialogue," with an English-speaking audience of over 60 million people. Inch by inch we are working our way into the mainstream media and into the public's consciousness.

Also, AE911Truth has been approved as a 501(c)(3) tax-exempt non-profit organization. Donations from U.S. taxpayers can be tax-deductible for our supporters.

While it's obvious our efforts are working, our reach always exceeds our grasp. We need additional staffing, publicity, information technology and legal support to meet our objectives in support of our mission.

If you are already a financial supporter, we thank you! If not, please join the family of sustaining supporters now at AE911Truth.org and set up a monthly donation that works comfortably -- or perhaps even a bit uncomfortably -- with in your budget.

You will be supporting the organization in two important ways. First, you will be providing immediate, steady, and predictable funding that we can use for planning and budgeting toward our ultimate goal of obtaining a truly independent WTC investigation, second you will help us reduce the hidden costs of repeated, ongoing fundraising efforts.

With your support, we can continue our translations of the 9/11: Blueprint for Truth DVD, and our other awareness/action products into seven languages, attending A/E conferences and other speaking engagements, keeping up with increasing web traffic and online demands, obtaining much-needed legal counsel and public relations support, and much more.

If a monthly commitment is not feasible for you at this time, your one-time donations are still appreciated and will be put to excellent use. Remember -- we can only do the work only if we are supported by you. Will you help us today?

**WTC 7**  
Controlled Demolition?

0 seconds  
2 seconds  
3 seconds

1,000+ ARCHITECTS & ENGINEERS for 9/11 TRUTH

AE911Truth.org

# Nullifying Newton: Official Story Violates Laws of Physics

NEWTON from p. 3

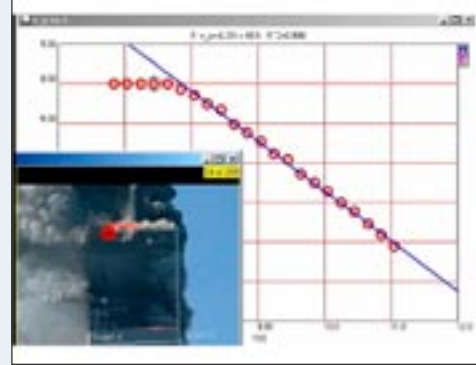
of WTC Building 7, see the article on page 1.

## The North Tower's Destruction: Race with Gravity

Using measurements from existing videos, Chandler was able to show that a series of what he describes as "demolition waves" travels down the side of the North Tower (WTC 1) even faster, at times, than the debris falling through air outside the Tower. This officially unexplained phenomenon can be seen in the video clips, Race with Gravity, and more recently Acceleration + Serendipity, at Chandler's website. Either something is moving through the building as fast as the debris is falling through air, or what we

that can clearly be seen by anyone. Chandler shows in the video North Tower Exploding a series of widespread, continuous, explosive ejections of material occurring on multiple floors at once. Individual steel frame members weighing many tons are ejected horizontally, some at speeds exceeding 70 mph. Some steel members traveled horizontal distances of 600 feet. Others embedded themselves in the walls of neighboring buildings.

The top section of the building, above the airplane impact point, is what NIST claimed crushed the rest of the building to the ground. But the top section is notably absent in this video. There is no visual evidence of anything crushing the building.



Video evidence shows constant acceleration down of WTC 1 roof.

are seeing is a wave of timed explosions. This wave of ejections is the fastest-moving feature of the collapse, racing far ahead of the overall building collapse.

## "North Tower Exploding"

Incredibly, NIST took its analysis of the destruction of



the North Tower (WTC 1) only to the point when the building started to collapse. The omitted visual evidence in the video reveals features of the collapse

## Downward Acceleration of the North Tower

Chandler clearly demonstrates in "Downward Acceleration of the North Tower" on his website that the top section of the North Tower (WTC 1) accelerated down at a constant rate which equaled about 2/3 of freefall.

Using basic physics, he notes that the fact that the top section continued to accelerate downward, it proves that the top section was not exerting enough force to destroy the lower section of the building. Rather, it was the destruction of the lower section by other means that allowed the top section to continue to accelerate. This is again strong evidence for the use of explosives.

Be sure to see the rest of these excellent videos, including, Cutter Charges in the North Tower of the World Trade Center, which shows how he was able to link two "puffs" to an actual column being cut. These are striking examples which use high school physics to provide a devastating challenge to the official conspiracy theory. Additional critical analysis can be found in Jim Hoffman's essay NIST's 3-Year \$20,000,000 Cover-up of the Crime of the Century.

# Summary of Evidence A Call to Action

By PETE DENNEY

The destruction of the Twin Towers and WTC Building 7 were the largest structural failures in modern history. The official story, as told by the 9/11 Commission and NIST, claims that fires weakened the structures, causing all three buildings to collapse. However, the evidence, most of which was omitted from official reports, supports a very different conclusion: explosive controlled demolition.

## Let's re-cap the evidence:

1. Rapid onset of destruction with unnatural symmetry of debris
2. Constant acceleration at or near free-fall through the path of what should have been greatest resistance
3. 118 witnesses to explosions and flashes of light, and foreknowledge of WTC 7's collapse
4. Lateral ejection of multi-ton steel sections 600 feet at more than 60 mph
5. Mid-air pulverization of 90,000 tons of concrete, and massive volumes of expanding pyroclastic-like dust clouds
6. Isolated explosive ejections 20 to 60 stories below "crush zone"
7. Total destruction of all three buildings, with 220 missing floors from the Twin Towers -- each an acre in size
8. Several tons of molten steel/iron
9. Evidence of thermite incendiaries on steel beams
10. Nanothermite composites found in WTC dust
11. Destruction of Evidence by those in charge of the investigation

With such overwhelming evidence supporting the hypothesis of intentional destruction, demolition experts agreeing that the preparation to execute the controlled demolition of a high-rise building takes months to plan and carry out, and several credible reports of foreknowledge, it is only reasonable to suspect that powerful insiders, not just the 19 alleged hijackers, were behind the destruction.

We at AE911Truth believe that it is time for every American to face the facts and then your own conscience. Almost 3000 people were murdered at the WTC on the morning of September 11, 2001. The United States has invaded two countries under cover of the rhetoric of the War on Terror, resulting in massive casualties and unprecedented deficit spending. We have lost many of our civil liberties as a result of the PATRIOT Act, the Military Commissions Act, and other laws enacted in reaction to 9/11.

Once you, too, investigate the evidence we believe that you will want to take action.

Here are a few suggestions:

1. Continue to educate yourself and others. Send the AE911Truth.org link to every architect and engineer that you can find and everyone else that you know. Show them the DVD, "9/11: Blueprint for Truth - The Architecture of Destruction."
2. Support AE911Truth.org. Sign our petition, volunteer, or join our family of sustaining supporters.
3. Write your congress person, other officials, and the media. Demand a new, independent investigation with subpoena power.

Let your conscience be your guide to action. This is a time for true patriots to step forward and take lead.



# 1,000 Architects & Engineers



AE911Truth founder Richard Gage has given dozens of radio and TV interviews in the last three years.

ARCHITECTS from p. 1

Congress member on Capitol Hill and have presented to many of them or their staffers personally. Yet the mainstream media and Congress remain largely silent in the face of what are surely terrifying implications of this information.

Our mission is to research, compile, and disseminate scientific evidence relative to the destruction of the three World Trade Center skyscrapers, calling for a truly open and independent investigation and supporting others in the pursuit of justice.

Our work at Architects & Engineers for 911 Truth (AE911Truth) is dedicated to the victims, families and all others throughout the world affected by the tragic events of September 11, 2001, and its aftermath.

We believe that there is sufficient evidence to conclude that the World Trade Center buildings 1 (North Tower), 2 (South Tower), and 7 (the 47 story high-rise across Vesey St.) were destroyed NOT by jet impact and fires but by controlled demolition with explosives. We therefore call upon Congress for a truly independent investigation with subpoena power.

In particular, our DVD, 9/11: Blueprint for Truth - The Architecture of Destruction, is packaged in 10, 30, 60, and 120 minute versions, presents the key points necessary to convince anyone with an open mind that this is the case, and that an investigation based on the Scientific Method is 9 years overdue.

We encourage architects, engineers, and others with writing or speaking skills to take an active role by means of writing letters and articles, giving presentations, and other means of responsible and effective public education.

We also support 9/11 truth groups across the planet in creating street visibility -- handing out our literature and DVDs on the 11th of each month.

How will you help the work of Architects & Engineers for 9/11 Truth?



AE911Truth Action Groups are springing up all over the country. Join or start one!

Get the DVD:

**9/11: Blueprint for Truth - The Architecture of Destruction**

At the AE911Truth.org store